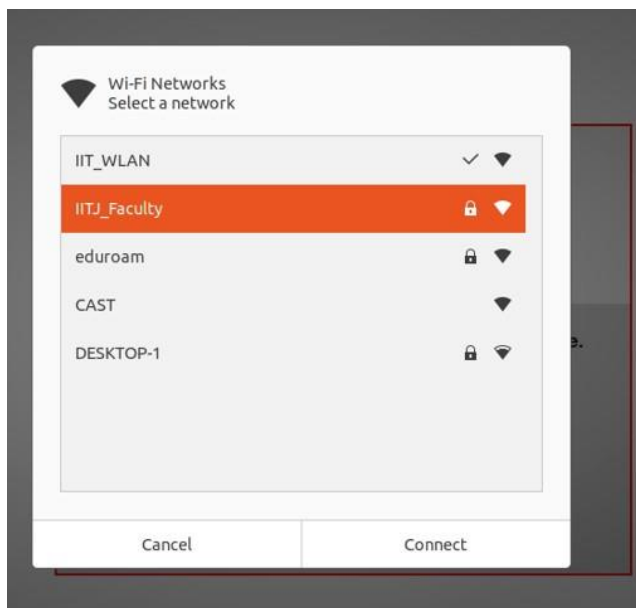
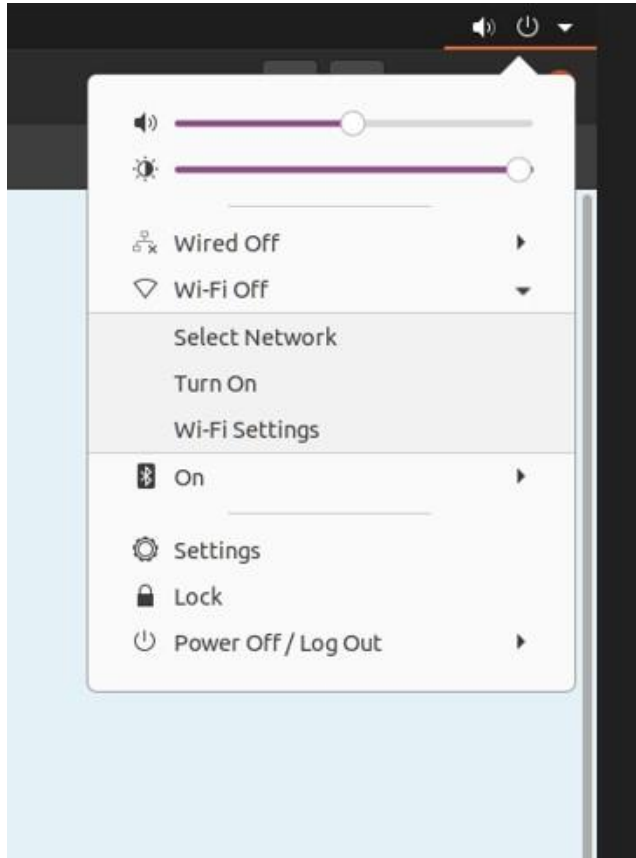


## IITJ\_WLAN configuration steps for Linux User

Connect with SSID: IITJ\_WLAN from available Wi-Fi connection on your machine. Enter your internet access username and password and click on okay to access internet services.

Select Network under Wi-Fi connection and select IITJ\_WLAN to connect.



On authentication popup kindly select following settings.

SSID: IITJ\_WLAN

Security: WPA2/WPA3 Enterprise / 802.1x EAP

Authentication: Protected EAP (PEAP)

Anonymous identity: leave it blank

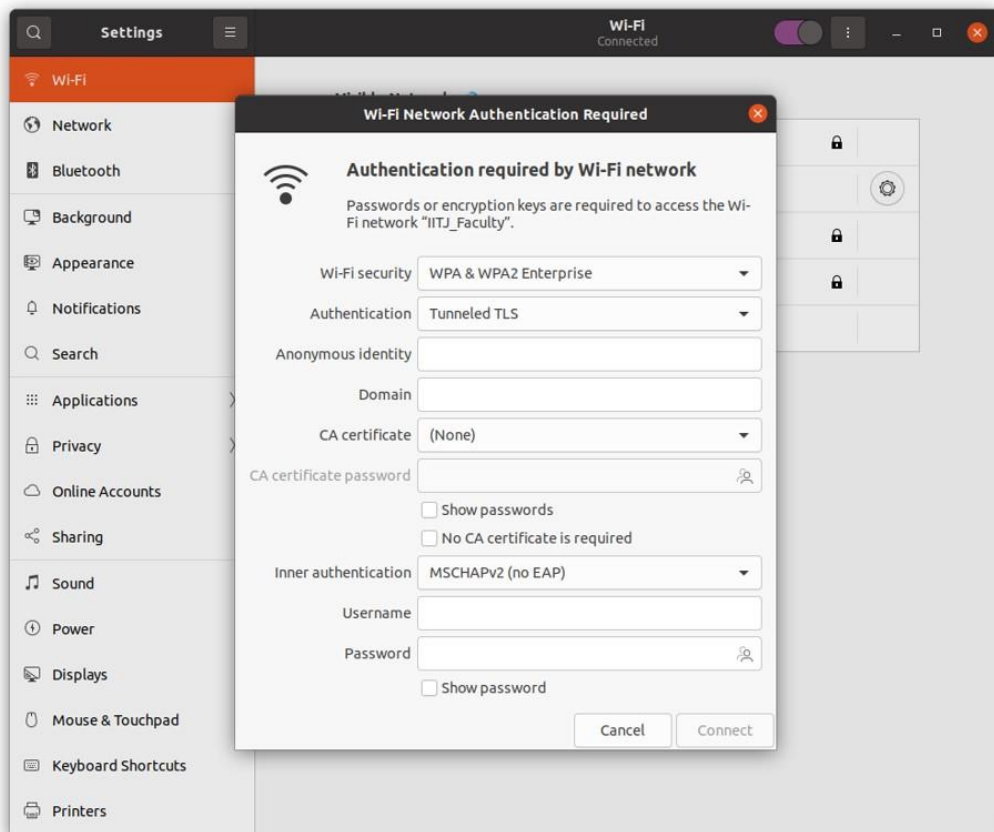
CA Certificate: select No CA certificate is required

PEAP version: Automatic

Inner authentication: MSCHAPV2

Username: (Internet access ID)

Password: (Internet access password)



IITJ\_WLAN Apply

IPv4 IPv6 Security

Security WPA & WPA2 Enterprise

Authentication Protected EAP (PEAP)

Anonymous identity

CA certificate (None)

☒ No CA certificate is required

PEAP version Automatic

Inner authentication MSCHAPv2

Username vik

Password ..... ☐ Show password

At last click on Apply and access the internet services.